

QUADRO



Stabile Tragarm-Systeme
50 - 60 - 80

Solid suspension-systems
50 - 60 - 80

Stabile draagarmsystemen
50 - 60 - 80

3 individuelle Gehäuse-Tragarmsysteme

Tragarmsystem für mittlere und schwere Belastungen

Hochbelastbare Systemteile aus Sphäroguß

Problemlose Ausrichtung der Systeme

3 individual enclosure suspension systems

Suspension systems for medium and heavy load capacity

High load capacity as system parts are made of spheroidal

Problem-free adjustment of the systems

3 Individuele draagarmsystemen voor behuizingen

Draagarmsysteem voor middelmatig zware en zware belastingen

Uiterst belastbare systeemonderdelen van hoogvast gietijzer met bolvormig grafiet

Probleemloze afstelling van het systeem

TECHNISCHE DATEN QUADRO 50-60-80

Material
Systemelemente aus Aluminium und aus hochfestem Sphäroguß.

Oberfläche Systemelemente
Pulverlackierung
Fenstergrau RAL 7040.
Optional: Sonderfarben.

Oberfläche Verbindungsrohre
Pulverlackierung
Lichtgrau RAL 7035.
Optional: Sonderfarben.

Faltenbälge:
Lichtgrau ähnlich RAL 7035.

Schutzart
IP 54 / EN 60529

Kabelführung
Innenliegend geschützt.

Anzugsdrehmoment
für Schneidringsschrauben
30 Nm = 3 kg/m

TECHNICAL DATA QUADRO 50-60-80

Material
Systemelements made of aluminium and of high-strength spheroidal.

Coating systemelements
Powder coated
RAL 7040 window grey.
Special colours on request.

Coating connecting tubes
Powder coated
RAL 7035 light grey.
Special colours on request.

Fold protective coverings
Similar to RAL 7035 light grey.

Ingress protection
IP 54 / EN 60529

Cable routing
Internal and protected.

Torque
For self cutting screws
30 Nm = 3 kg/m

TECHNISCHE GEGEVENS QUADRO 50-60-80

Materiaal
Systeemelementen van aluminium en van hoogvast gietijzer met bolvormig grafiet.

Lak systeemelementen
Gemoffeld
RAL 7040 venstergrijs.
Speciale kleuren optioneel.

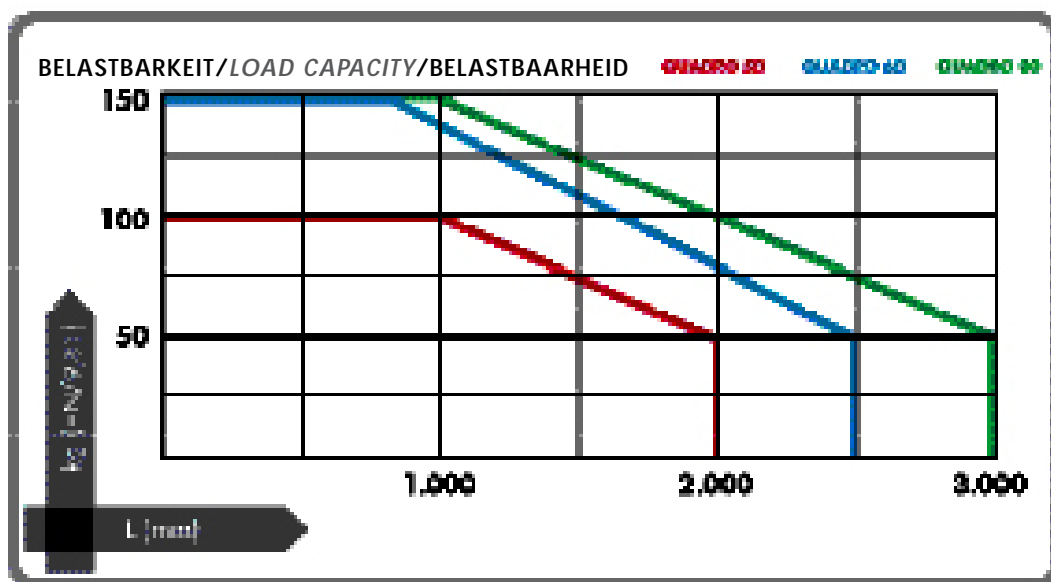
Coating verbindingbuizen
Gemoffeld
RAL 7035 lichtgrijs.
Speciale kleuren optioneel.

Vouwbalgen:
Als RAL 7035 lichtgrijs.

Beschermklasse
IP 54 / EN 60529

Kabelgeleiding
Binnenliggend en beschermd.

Aandraaimoment
voor zelftappende schroeven
30 Nm = 3 kg/m



QUADRO

Tragarm-System
Suspension-system
Draagarmsysteem





Varianten von QUADRO 50
Variations of QUADRO 50
Varianten van de QUADRO 50



Systemelemente/ System elements/ Systemelementen

QUADRO 50 Mat.-Nr.		Typ Type Type			Material Material Materiaal	g
1	147.025.500	Kupplung	<i>Coupling</i>	Koppeling	Al	1.250
2	147.035.500	Winkelkupplung	<i>Elbow coupling</i>	Hoekkoppeling	Al	2.000
3	147.020.500	Winkel	<i>Elbow</i>	Hoek	Al	1.350
3a	149.021.000	taraPLUS/QUADRO 50 Winkel	<i>taraPLUS/QUADRO 50 elbow</i>	taraPLUS/QUADRO 50 Hoek	Al	1.480
4	147.020.501	Kontrollleuchtenadapter	<i>Control lamp adapter</i>	Controlelampadapter	Al	25
5	147.015.000	Zwischengelenk	<i>Intermediate joint</i>	Tussenscharnier	GGG	4.250
6	147.010.000	Wandgelenk	<i>Wall joint</i>	Wandscharnier	GGG	4.350
7	147.005.500	Aufsatzgelenk	<i>Socket joint</i>	Opzetscharnier	GGG	5.400
8	147.040.000	Aufsteckgelenk	<i>Tube rotation joint</i>	Opsteekscharnier	GGG	6.650
9	147.030.000	Standfuß	<i>Base</i>	Standvoet	GGG	3.250
10	147.025.002	Neigungskupplung	<i>Inclination coupling</i>	Inclinatiekoppeling	Al/PA	3.000
31	140.045.000	Neigungsadapter 30°/60°	<i>Inclination adapter 30°/60°</i>	Inclinatieadapter 30°/60°	Al	1.100
32	144.020.500	Vierkantrohr 0,50 m	<i>Square tube, 0,50 m</i>	Vierkante buis 0,50 m	Fe	3.375
32	144.021.000	Vierkantrohr 1,00 m	<i>Square tube, 1,00 m</i>	Vierkante buis 1,00 m	Fe	6.750
32	144.021.500	Vierkantrohr 1,50 m	<i>Square tube, 1,50 m</i>	Vierkante buis 1,50 m	Fe	10.125
32	144.022.000	Vierkantrohr 2,00 m	<i>Square tube, 2,00 m</i>	Vierkante buis 2,00 m	Fe	13.500

QUADRO 60 Mat.-Nr.		Typ Type Type			Material Material Materiaal	g
11	147.025.100	Kupplung	<i>Coupling</i>	Koppeling	Al	2.150
12	147.035.100	Winkelkupplung	<i>Elbow coupling</i>	Hoekkoppeling	Al/GGG	3.850
13	147.020.100	Winkel	<i>Elbow</i>	Hoek	Al/GGG	3.850
15	147.015.100	Zwischengelenk	<i>Intermediate joint</i>	Tussenscharnier	GGG	5.550
16	147.010.100	Wandgelenk	<i>Wall joint</i>	Wandscharnier	GGG	5.700
17	147.005.100	Aufsatzgelenk	<i>Socket joint</i>	Opzetscharnier	GGG	9.300
19	147.030.100	Standfuß	<i>Base</i>	Standvoet	GGG	3.750
20	147.025.102	Neigungskupplung	<i>Inclination coupling</i>	Inclinatiekoppeling	Al/PA	2.900
31	140.045.000	Neigungsadapter 30°/60°	<i>Inclination adapter 30°/60°</i>	Inclinatieadapter 30°/60°	Al	1.100
32	144.030.500	Vierkantrohr 0,50 m	<i>Square tube, 0,50 m</i>	Vierkante buis 0,50 m	Fe	3.375
32	144.031.000	Vierkantrohr 1,00 m	<i>Square tube, 1,00 m</i>	Vierkante buis 1,00 m	Fe	6.750
32	144.031.500	Vierkantrohr 1,50 m	<i>Square tube, 1,50 m</i>	Vierkante buis 1,50 m	Fe	10.125
32	144.032.000	Vierkantrohr 2,00 m	<i>Square tube, 2,00 m</i>	Vierkante buis 2,00 m	Fe	13.500

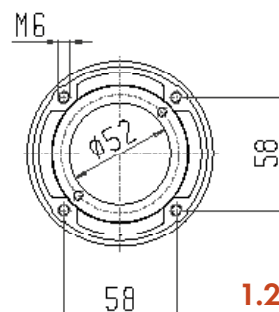
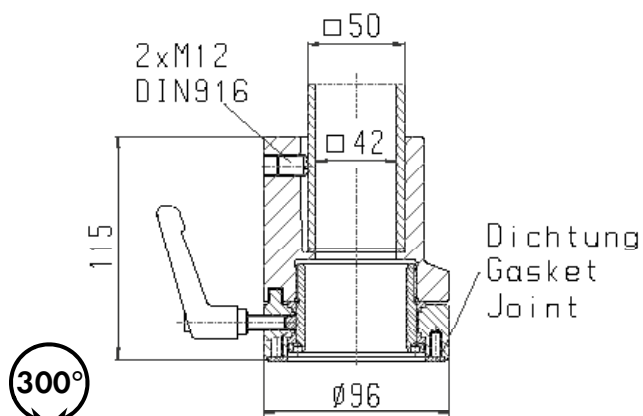
QUADRO 80 Mat.-Nr.		Typ Type Type			Material Material Materiaal	g
21	147.025.700	Kupplung	<i>Coupling</i>	Koppeling	Al	3.100
22	147.035.700	Winkelkupplung	<i>Elbow coupling</i>	Hoekkoppeling	Al	6.550
23	147.020.700	Winkel	<i>Elbow</i>	Hoek	Al	2.400
24	147.020.701	Kontrollleuchtenadapter	<i>Control lamp adapter</i>	Controlelampadapter	Al	80
25	147.015.200	Zwischengelenk	<i>Intermediate joint</i>	Tussenscharnier	GGG	10.000
26	147.010.200	Wandgelenk	<i>Wall joint</i>	Wandscharnier	GGG	9.450
27	147.005.700	Aufsatzgelenk	<i>Socket joint</i>	Opzetscharnier	GGG	15.700
29	147.030.200	Standfuß	<i>Base</i>	Standvoet	GGG	7.000
30	147.025.202	Neigungskupplung	<i>Inclination coupling</i>	Inclinatiekoppeling	Al/PA	2.900
31	140.045.000	Neigungsadapter 30°/60°	<i>Inclination adapter 30°/60°</i>	Inclinatieadapter 30°/60°	Al	1.100
32	144.040.500	Vierkantrohr 0,50 m	<i>Square tube, 0,50 m</i>	Vierkante buis 0,50 m	Fe	3.375
32	144.041.000	Vierkantrohr 1,00 m	<i>Square tube, 1,00 m</i>	Vierkante buis 1,00 m	Fe	6.750
32	144.041.500	Vierkantrohr 1,50 m	<i>Square tube, 1,50 m</i>	Vierkante buis 1,50 m	Fe	10.125
32	144.042.000	Vierkantrohr 2,00 m	<i>Square tube, 2,00 m</i>	Vierkante buis 2,00 m	Fe	13.500

▲ Abbildung Nr. auf den folgenden Seiten - Picture nr. on following pages - Afbeeldingnr. op de volgende pagina's

QUADRO

Gehäusekupplung
Enclosure coupling
Behuizingskoppeling

QUADRO 50

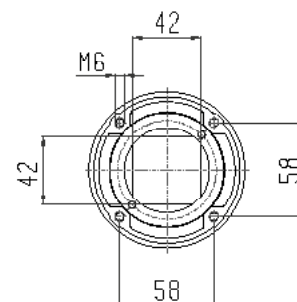
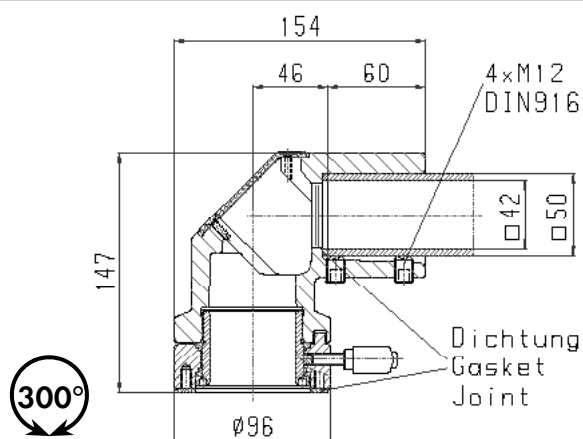


147.025.500

1.250 g

Winkelkupplung
Elbow coupling
Hoekkoppeling

QUADRO 50

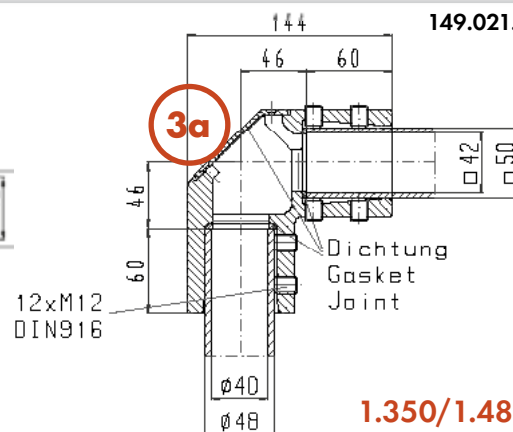
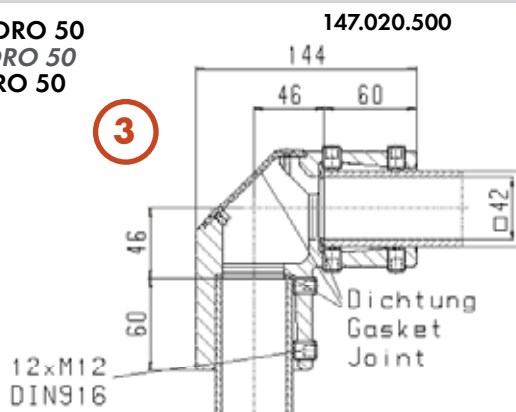


147.035.500

2.000 g

Winkel/taraPLUS-QUADRO 50
Elbow/taraPLUS-QUADRO 50
Hoek/taraPLUS-QUADRO 50

QUADRO 50



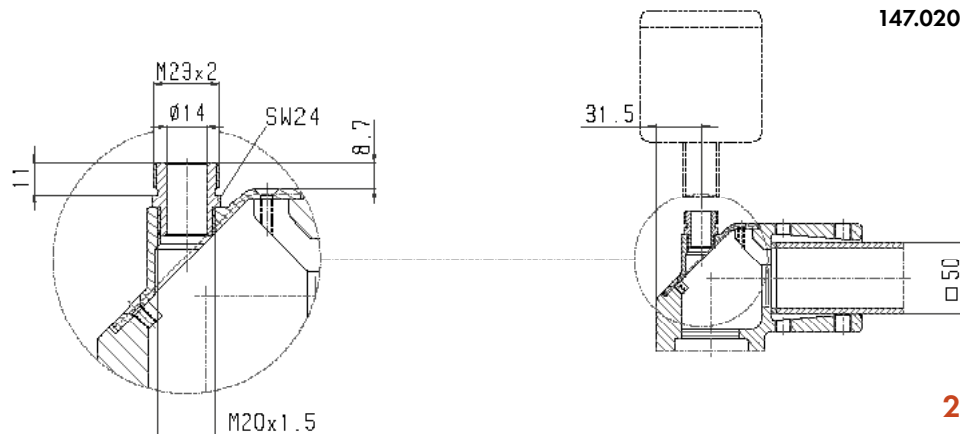
147.020.500

149.021.000

1.350/1.480 g

Kontrollleuchtenadapter
Control lamp adapter
Controlelampadapter

QUADRO 50



147.020.501

25 g

Zwischengelenk
Intermediate joint
Tussenscharnier

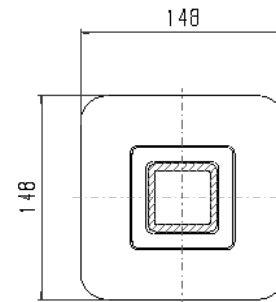
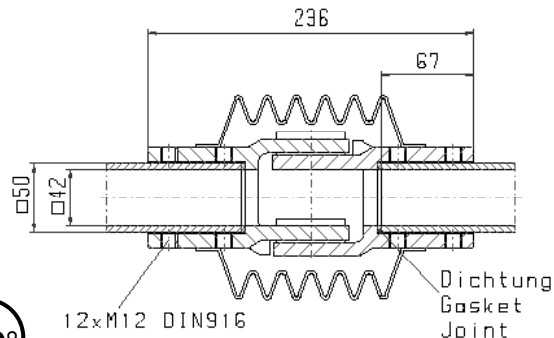
147.015.000

QUADRO 50



5

170°



4.250 g

Wandgelenk
Wall joint
Wandscharnier

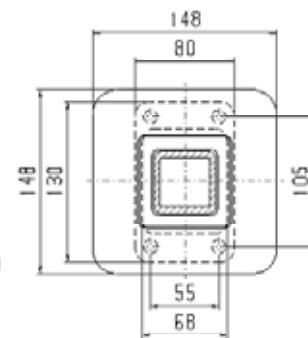
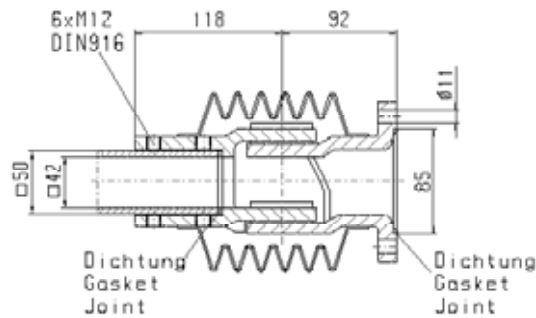
147.010.000

QUADRO 50



6

170°



4.350 g

Aufsatzgelenk
Socket joint
Opzetscharnier

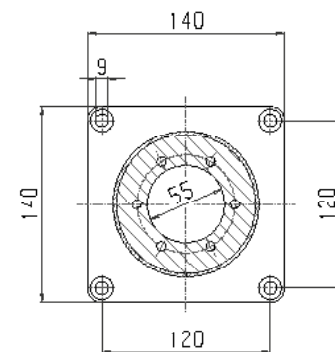
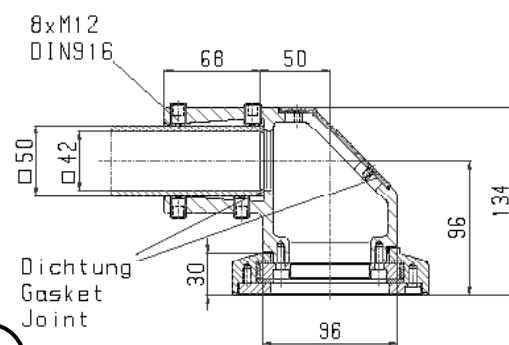
147.005.500

QUADRO 50



7

300°



5.400 g

Aufsteckgelenk
Tube rotation joint
Opsteekscharnier

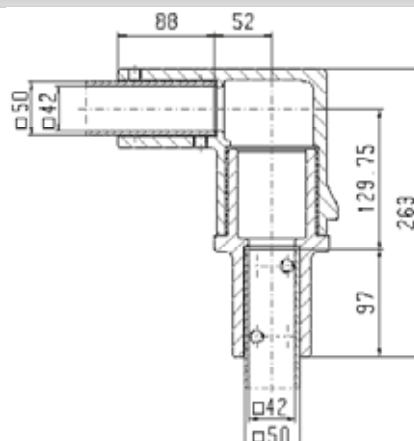
147.040.000

QUADRO 50



8

325°



6.650 g

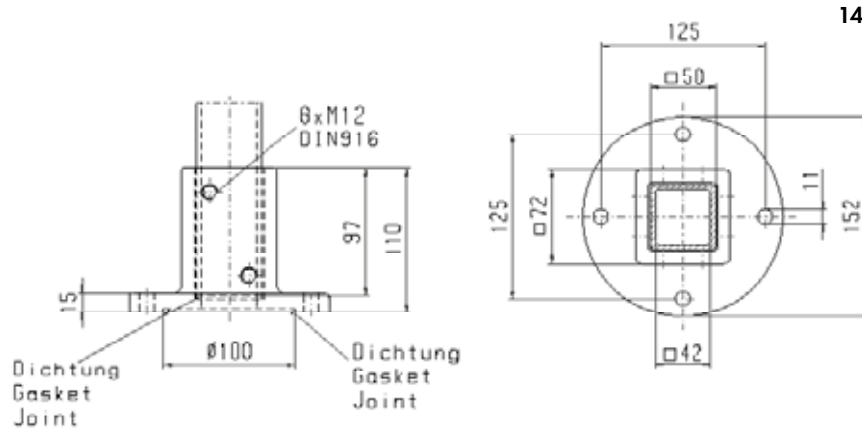
QUADRO

Standfuß
Base
Standvoet

QUADRO 50



9



147.030.000

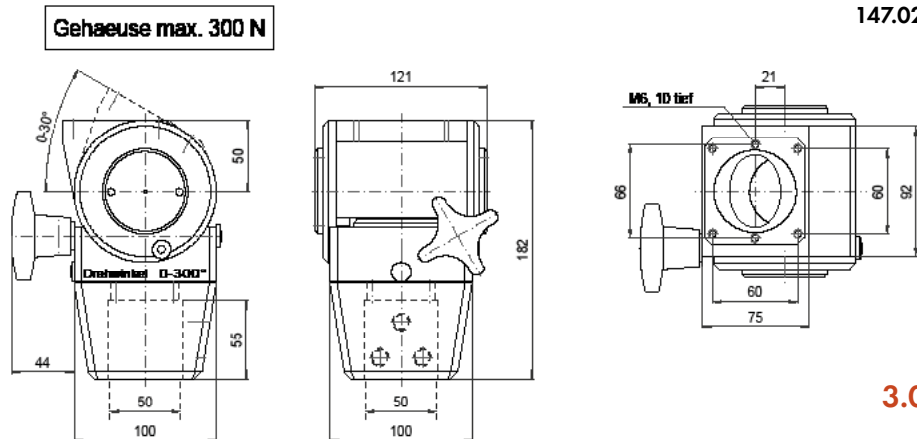
3.250 g

Neigungskuplung
Inclination coupling
Inclinatiekoppeling

QUADRO 50



10



Gehäuse max. 300 N

147.025.002

3.000 g

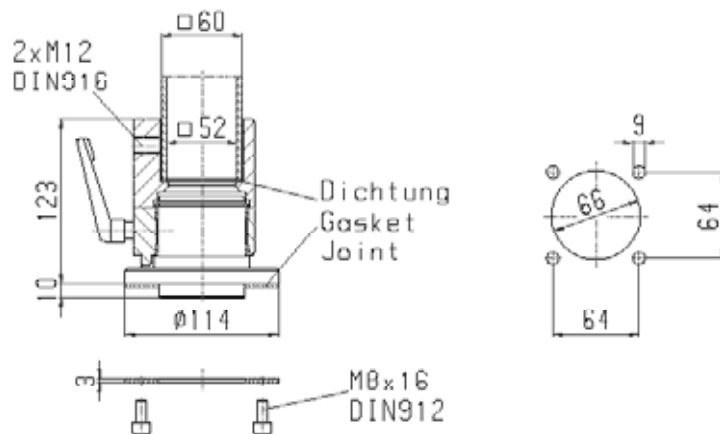
Gehäusekuplung
Enclosure coupling
Behuizingskoppeling

QUADRO 60



11

310°



147.025.100

2.150 g

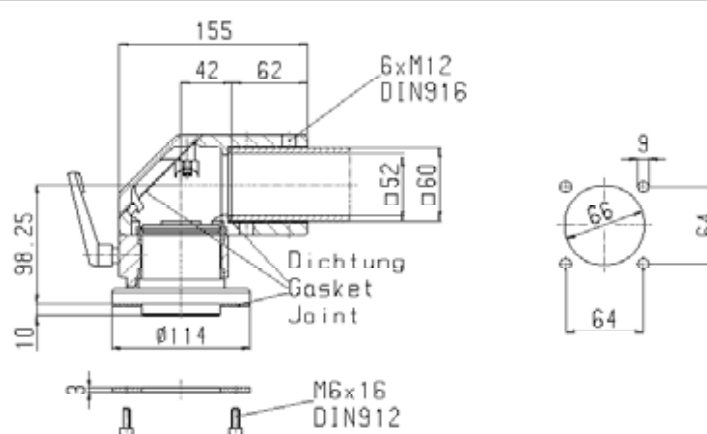
Winkelkuplung
Elbow coupling
Behuizingskoppeling

QUADRO 60



12

310°



147.035.100

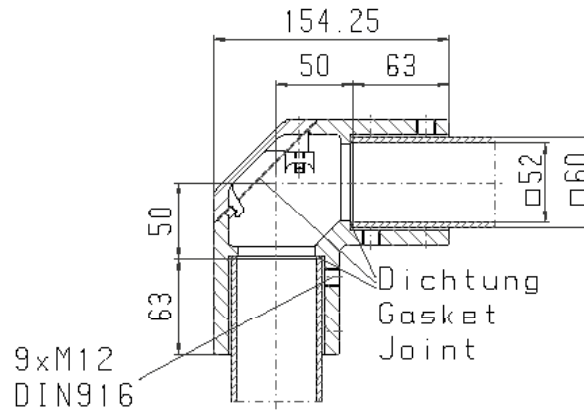
3.850 g

Winkel
Elbow
Hoek

147.020.100

QUADRO 60

13



3.850 g

Zwischengelenk
Intermediate joint
Tussenscharnier

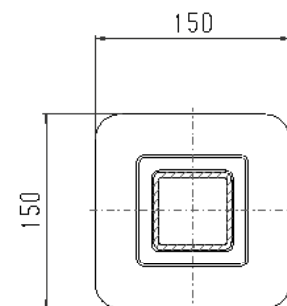
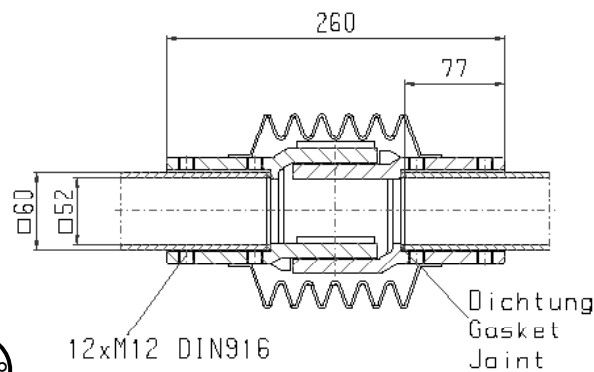
147.015.100

QUADRO 60

15



170°



5.550 g

Wandgelenk
Wall joint
Wandscharnier

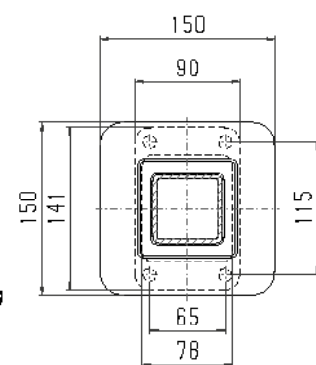
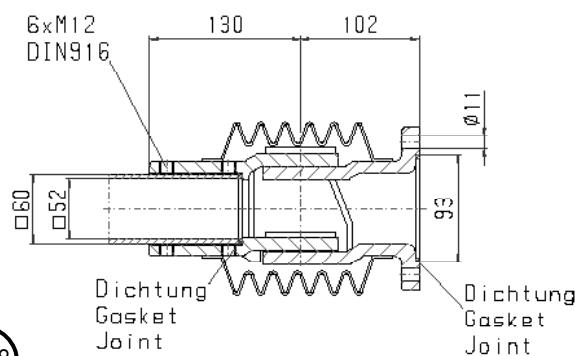
147.010.100

QUADRO 60

16



170°



5.700 g

Aufsatzgelenk
Socket joint
Opzetscharnier

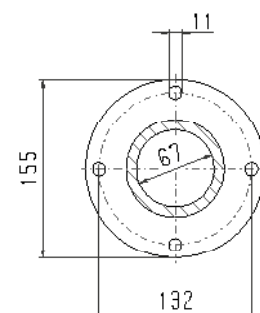
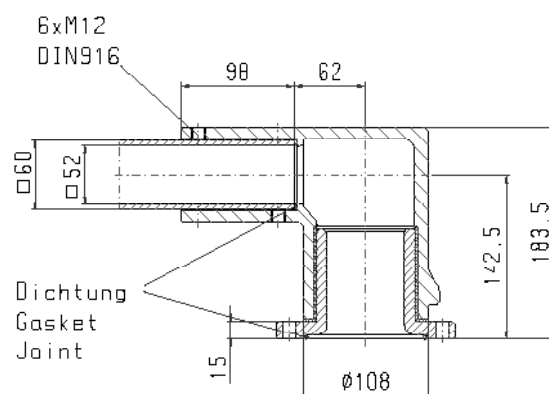
147.005.100

QUADRO 60

17



335°



9.300 g

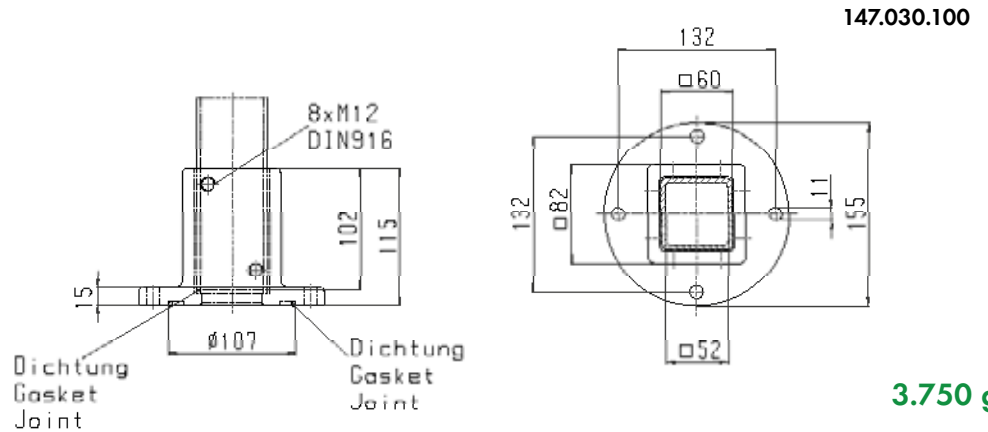
QUADRO

Standfuß
Base
Standvoet

QUADRO 60



19

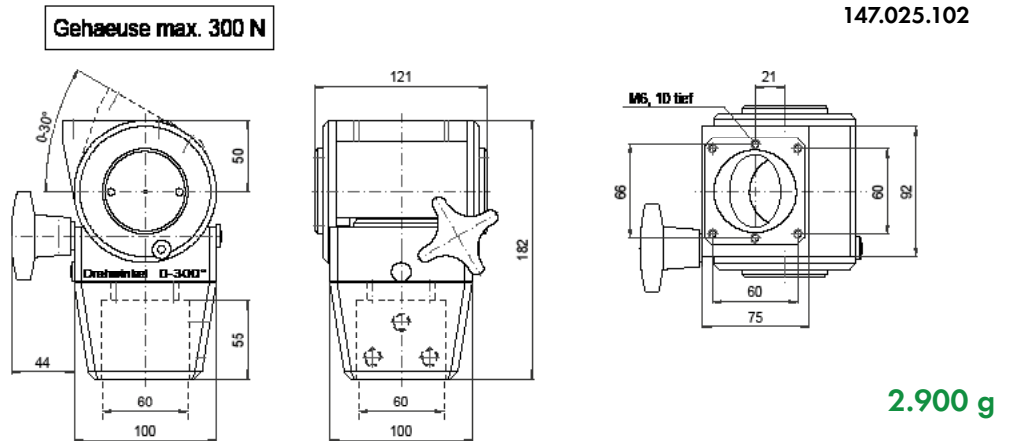


Neigungskuplung
Inclination coupling
Inclinatiekoppeling

QUADRO 60



20

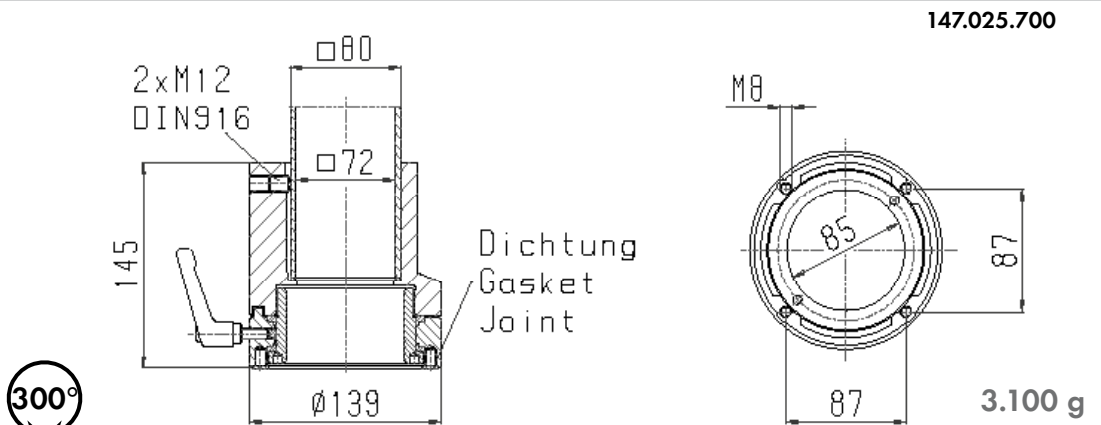


Gehäusekuplung
Enclosure coupling
Behuizingskoppeling

QUADRO 80



21

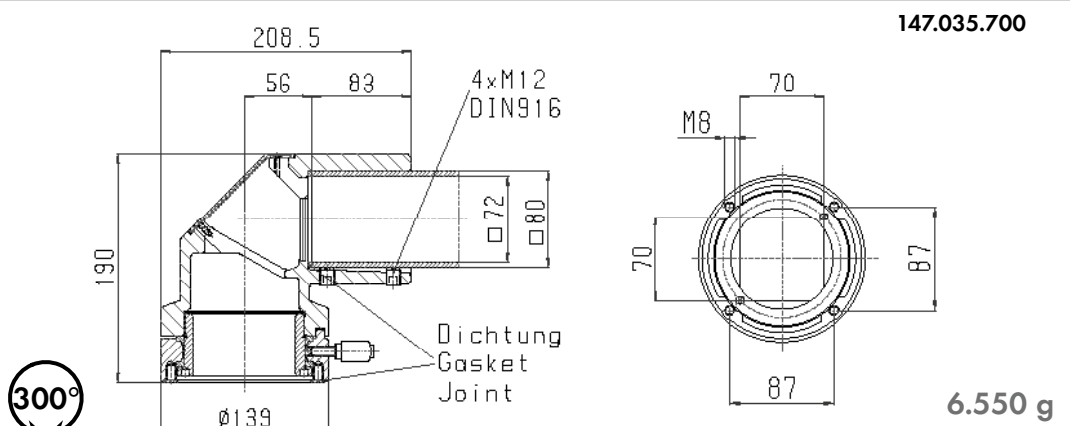


Winkelkuplung
Elbow coupling
Behuizingskoppeling

QUADRO 80



22

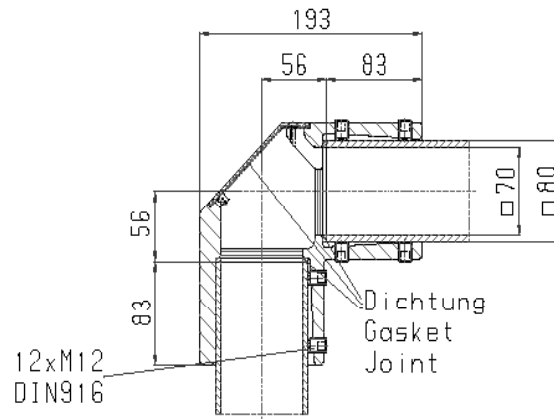


Winkel
Elbow
Hoek

QUADRO 80

147.020.700

23



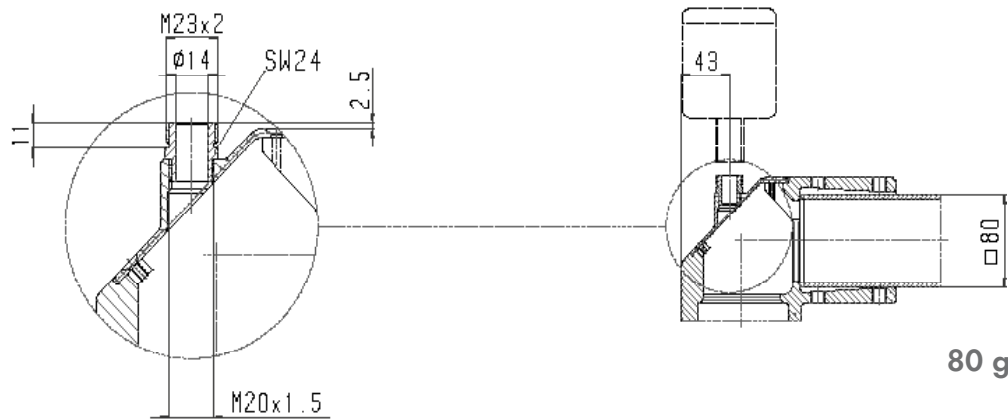
2.400 g

Kontrollleuchtenadapter
Control lamp adapter
Controlelampadapter

QUADRO 80

147.020.701

24



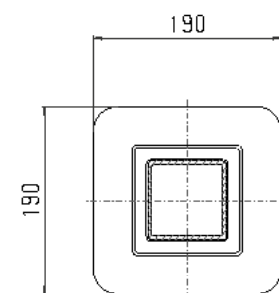
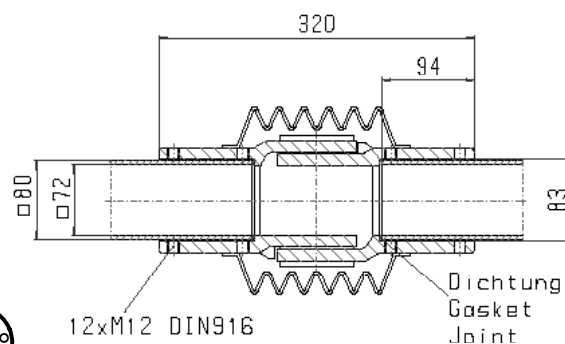
80 g

Zwischengelenk
Intermediate joint
Tussenscharnier

QUADRO 80

147.015.200

25



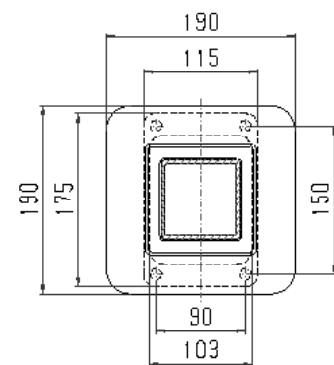
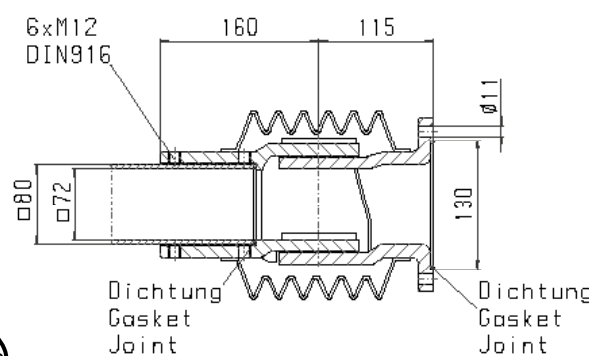
10.000 g

Wandgelenk
Wall joint
Wandscharnier

QUADRO 80

147.010.200

26



9.450 g

QUADRO

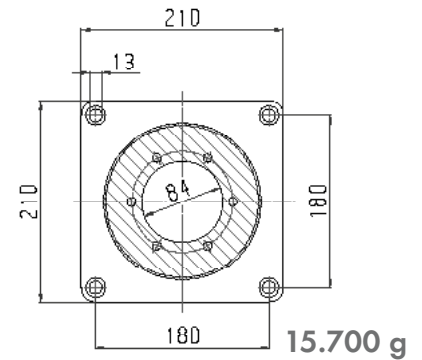
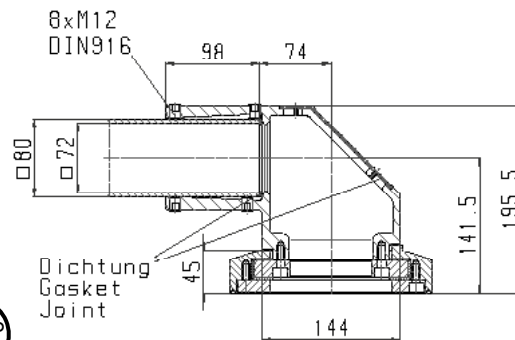
Aufsatzgelenk
 Socket joint
 Opzetscharnier
QUADRO 80

147.005.700

27



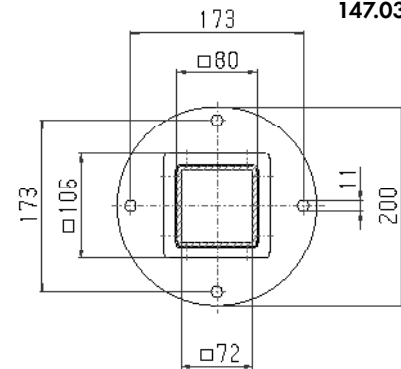
300°



Standfuß
 Base
 Standvoet
QUADRO 80

147.030.200

29



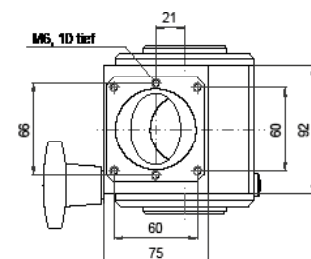
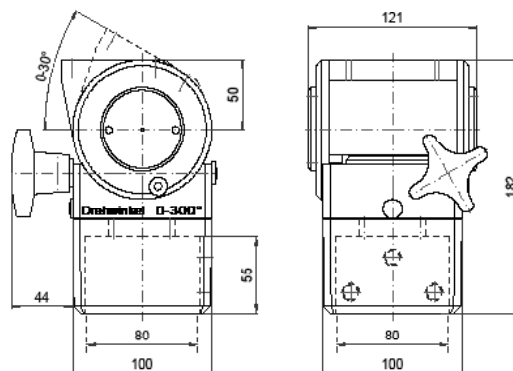
7.000 g

Neigungskupplung
 Inclination coupling
 Inclinatiekoppeling
QUADRO 80

Gehäuse max. 300 N

147.025.202

30

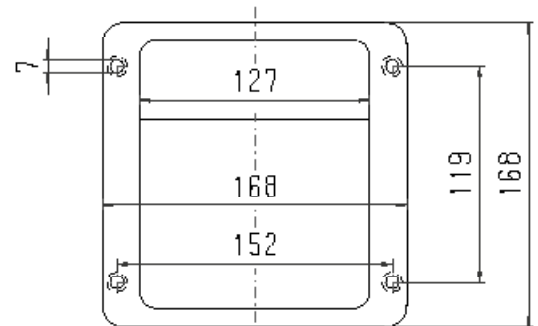
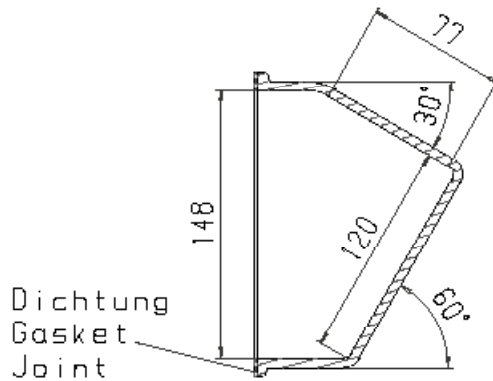


2.900 g

Neigungsadapter 30°/60°
Inclination adapter 30°/60°
Inclinatieadapter 30°/60°

140.045.000

QUADRO 50
QUADRO 60
QUADRO 80



1.100 g

1.100 g

1.100 g

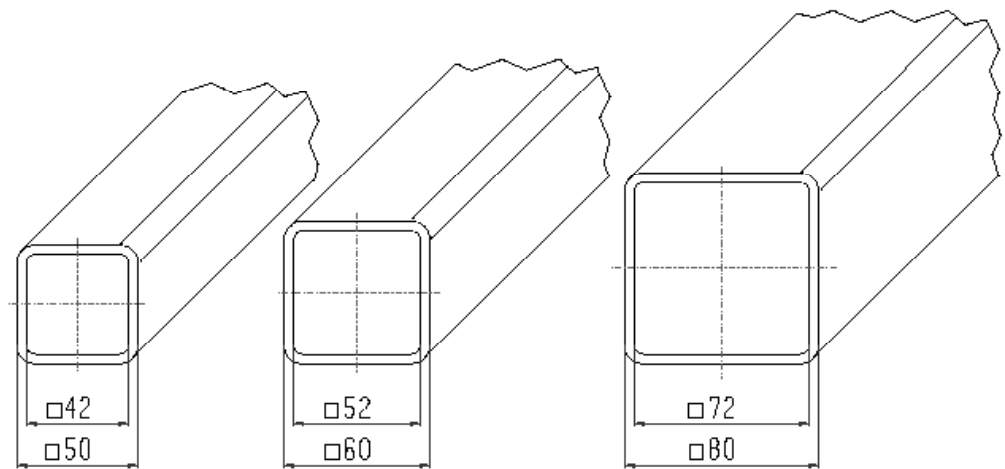
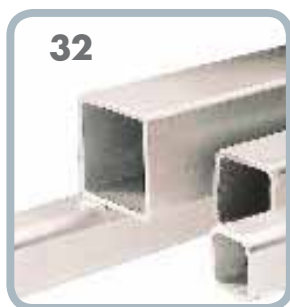
Vierkantrohr
Square tube
Vierkante buis

0,50 m 144.020.500
1,00 m 144.021.000
1,50 m 144.021.500
2,00 m 144.022.000

0,50 m 144.030.500
1,00 m 144.031.000
1,50 m 144.031.500
2,00 m 144.032.000

0,50 m 144.040.500
1,00 m 144.041.000
1,50 m 144.041.500
2,00 m 144.042.000

QUADRO 50
QUADRO 60
QUADRO 80



1,00 m=6.750 g

1,00 m=7.720 g

1,00 m=10.480 g

