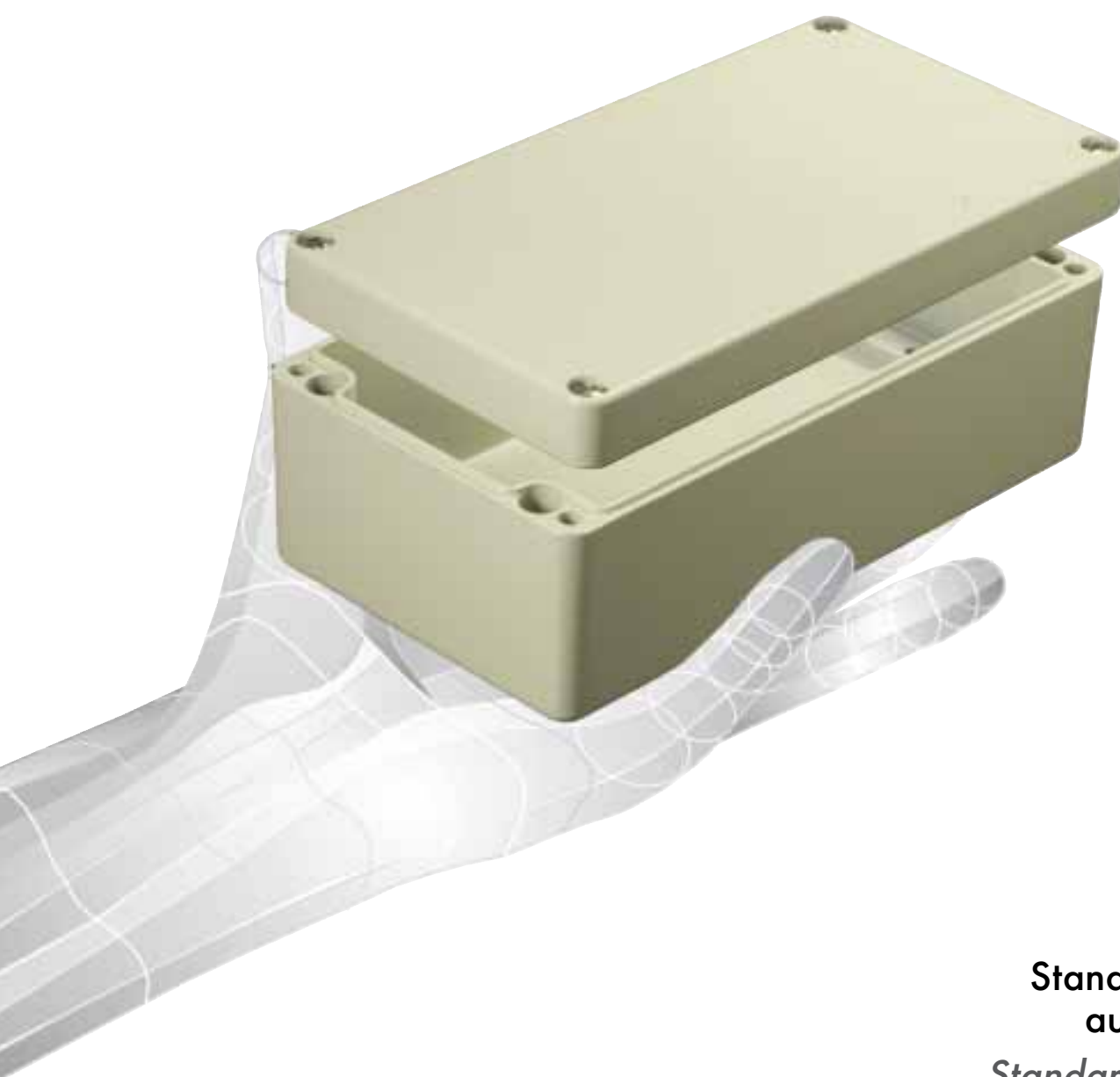


aluKOM



**Standardgehäuse
aus Aluminium**

*Standard enclosures
made of aluminium*

**Standardbehuizingen
van aluminium**

Kompatibel mit marktüblichen Fabrikaten

Umfangreiches Zubehörangebot

Große Auswahl an Gehäuseabmessungen

EMV-Ausführung auf Anfrage lieferbar

Schutzart IP 66

Compatible with available standard products

Wide variety of accessories

Many sizes available

EMC-version on request

Ingress protection IP 66

Compatibel met op de markt gebruikelijke fabrikaten

Grote keuze aan toebehoren

Grote keuze aan afmetingen voor de behuizingen

EMC-uitvoering leverbaar op aanvraag

Beschermklasse IP 66

TECHNISCHE DATEN

aluKOM

Gehäuse

Aluminiumguss Legierung: EN AC-44300 DIN EN 1706 (GD Al Si 12/DIN 1725). Entformungsschräge 1° → Lichte Innenmaße reduzieren sich bis zum Gehäuseboden um 1° umlaufend.

Schrauben

Deckelschrauben aus Edelstahl 1.4567, unverlierbar.

Schutzart

IP 66 EN 60529

Dichtung

Mit Chloropren-Dichtung (-30°C bis +100°C) oder TPE Formdichtung, silikonfrei. Optional: Silikon-Dichtung (-50°C bis +140°C).

Temperaturbeständigkeit

-30°C bis +100°C

Befestigung

Durch separate Schraubenkanäle. Befestigungslaschen als Zubehör lieferbar.

Einbauten

Befestigungspunkte in seitlichen Stegen mit Gewinde-Sacklöchern am Gehäuseboden.

Oberfläche

Pulverlackierung
Kieselgrau RAL 7032
Optional: Sonderfarben

TECHNICAL DATA

aluKOM

Enclosure

Die-cast aluminium: EN AC-44300 DIN EN 1706 (GD Al Si 12/DIN 1725). 1° mould slope for casting ejection → Internal measures diminishing circulatory towards enclosure bottom by 1°.

Lid-screws

Captive screws made of stainless steel 1.4567.

Ingress protection

IP 66 EN 60529

Gasket

Chloroprene string gasket (-30°C up to +100°C) or TPE designed gasket, siliconfree. Silicon-gasket (-50°C up to +140°C) on request.

Temperature range

-30°C up to +100°C

Fastening

Through single-channel-fastening system. Mounting brackets on request.

Internal mounting

Mounting points attached to lateral placed bridges placed sideways with blind holes in the enclosure bottom.

Coating

Powder coated
silky grey RAL 7032, special colours on request.

TECHNISCHE GEGEVENS

aluKOM

Behuizing

Aluminiumlegering: EN AC-44300 DIN EN 1706 (GD Al Si 12 / DIN 1725) Afschuining 1° → binnenwerkse maten reduceren zich rondom tot de behuizingsbodem met 1°.

Dekselbouten

Dekselbouten van roestvrij staal 1.4567, niet verliesbaar.

Beschermklasse

IP 66 EN 60529

Afdichting

Afdichting van chloropren (-30°C tot +100°C) of TPE vormafdichting, vrij van silicone. Op aanvraag silicone afdichting (-50° tot +140°C).

Temperatuurbestendigheid

-30°C tot +100°C

Bevestiging

Met afzonderlijke schroefkanalen. Bevestigingsstrippen beschikbaar als toebehoren.

Inbouw

Bevestigingspunten in zijdelingse bruggen met schroefdraadzakgaten op de behuizingsbodem.

Lakken


Gemoffeld.
Kieselgrijs RAL 7032
Speciale kleuren op aanvraag.

Ex-Katalog anfordern
Ex-catalogue on request
Ex-catalogus op aanvraag



 **M** Montageplatten
Mounting plates
Montageplatten

 **D** Silicon Deckeldichtung
Silicon enclosure gasket
Silicone dekselafdichting

 **A** Außenbefestigungslaschen
External mounting brackets
Buitenbevestigingsstrippen

 **EMV** Abschirmung
Shielding
Afscherming


 **T** Tragschienen
Supporting rail
Draagrail

 **HS** Haltescharniere
Hold hinges
Bevestigingsscharnieren

 **IS** V2A Innengelenke
Internal hinges V2A
Binnenscharnieren V2A

 **S** Scharniere
Hinges
Scharnieren

 **DH** Deckelhalterungen
Lidholders
Dekselhouder

 **L** Korrosionsschutzlackierung
Corrosion proof coating
Anticorrosielak

Standard/Standard/standaard

Lieferbar/available/leverbaar

Nicht lieferbar/not available/niet-leverbaar

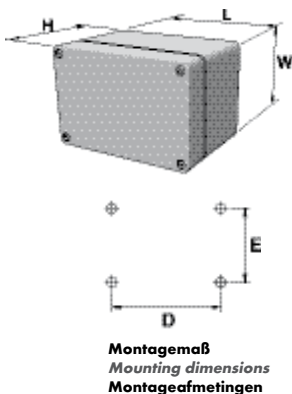
BESTELLBEISPIEL
ORDER EXAMPLE/BESTELVOORBEELD

Type: AK 083 + M + S + etc.



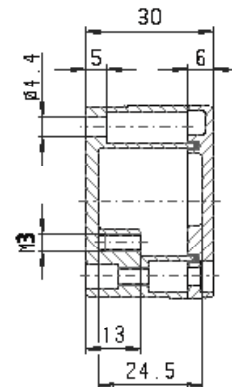
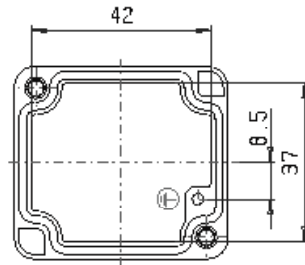
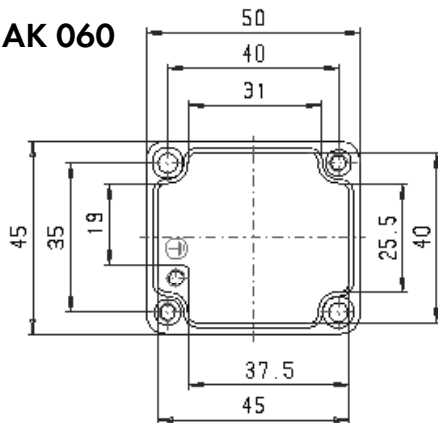
Lieferübersicht - Range overview - Overzichtstabel leveringen

Type	Mat.-Nr	L	W	H	D	E	g	M	D	A	EMV	L	T	HS	IS	S	DH
AK 060	106.060.000	50	45	30	40	35	80	○	●	○	●	●	○	○	○	○	○
* AK 061	106.061.000	58	64	36	46	36	160	○	●	○	●	●	●	○	○	○	○
* AK 062	106.062.000	98	64	36	86	36	220	○	●	○	●	●	●	○	○	○	○
* AK 063	106.063.000	150	64	36	138	36	340	○	●	○	●	●	●	○	○	○	○
* AK 081	106.081.000	75	80	57	63	52	290	●	●	○	●	●	●	○	○	○	●
* AK 082	106.082.000	125	80	57	113	52	440	●	●	○	●	●	●	○	○	○	●
* AK 083	106.083.000	175	80	57	163	52	530	●	●	○	●	●	●	○	○	○	●
AK 084	106.084.000	250	80	57	238	52	720	●	●	○	●	●	●	○	○	○	●
* AK 120	106.120.000	122	120	81	106	82	950	●	●	●	●	●	●	●	○	●	●
* AK 121	106.121.000	122	120	91	106	82	970	●	●	●	●	●	●	●	○	●	●
* AK 122	106.122.000	220	120	81	204	82	1.420	●	●	●	●	●	●	●	○	●	●
* AK 123	106.123.000	220	120	91	204	82	1.450	●	●	●	●	●	●	●	○	●	●
AK 124	106.124.000	360	120	81	344	82	1.860	●	●	●	●	●	●	●	○	●	●
* AK 161	106.161.000	160	160	90	140	110	1.410	●	●	●	●	●	●	●	●	●	●
* AK 162	106.162.000	260	160	90	240	110	1.950	●	●	●	●	●	●	●	●	●	●
AK 163	106.163.000	360	160	90	340	110	2.540	●	●	●	●	●	●	●	●	●	●
AK 164	106.164.000	560	160	90	540	110	4.310	●	●	●	●	●	●	●	●	●	●
AK 231	106.231.000	200	230	110	180	180	2.720	●	●	●	●	●	●	●	●	●	●
AK 232	106.232.000	280	230	110	260	180	3.850	●	●	●	●	●	●	●	●	●	●
AK 233	106.233.000	330	230	110	310	180	4.270	●	●	●	●	●	●	●	●	●	●
AK 234	106.234.000	400	230	110	380	180	4.880	●	●	●	●	●	●	●	●	●	●
AK 235	106.235.000	600	230	110	580	180	6.380	●	●	●	●	●	●	●	●	●	●
AK 311	106.311.000	402,5	310	110	382	261	6.300	●	●	●	●	●	●	●	●	●	●
AK 312	106.312.000	600	310	110	580	261	8.480	●	●	●	●	●	●	●	●	●	●



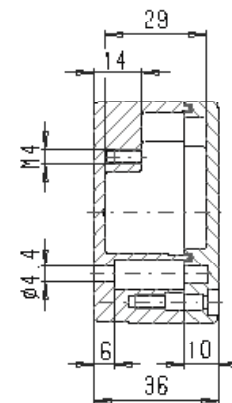
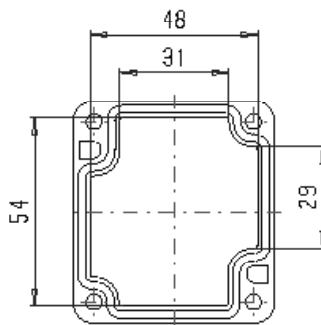
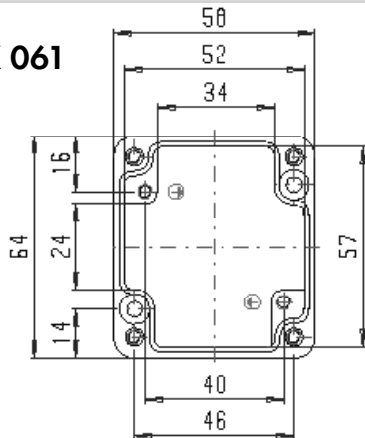
* TPE Formdichtung - TPE gasket - TPE afdichting

AK 060



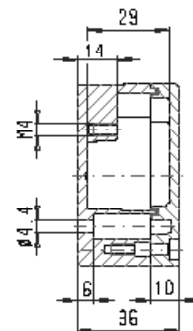
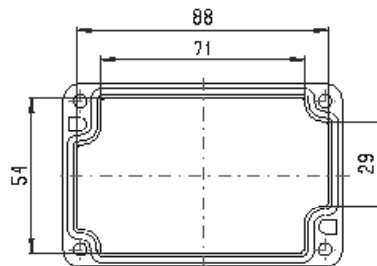
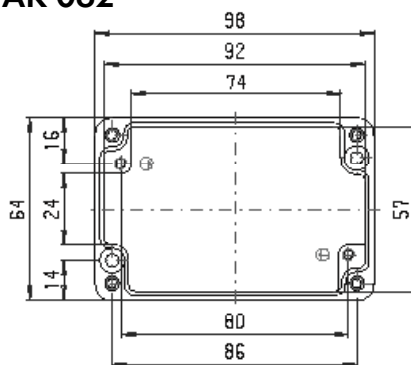
M Kabelverschraubungen			
a Cable glands			
x Kabelwartel			
A		A/B	C/D
c	D	PG 7	1 1
B		PG 9	1 1
		PG 11	
		PG 13,5	
		PG 16	
		PG 21	
		PG 29	
		PG 36	
		PG 42	
		PG 48	

AK 061



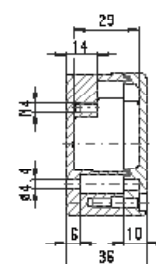
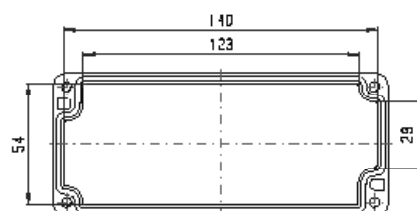
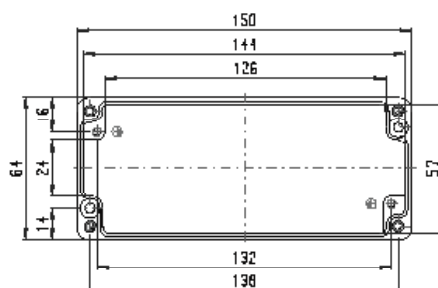
M Kabelverschraubungen			
a Cable glands			
x Kabelwartel			
A		A/B	C/D
c	D	PG 7	2 1
B		PG 9	1 1
		PG 11	
		PG 13,5	
		PG 16	
		PG 21	
		PG 29	
		PG 36	
		PG 42	
		PG 48	

AK 062



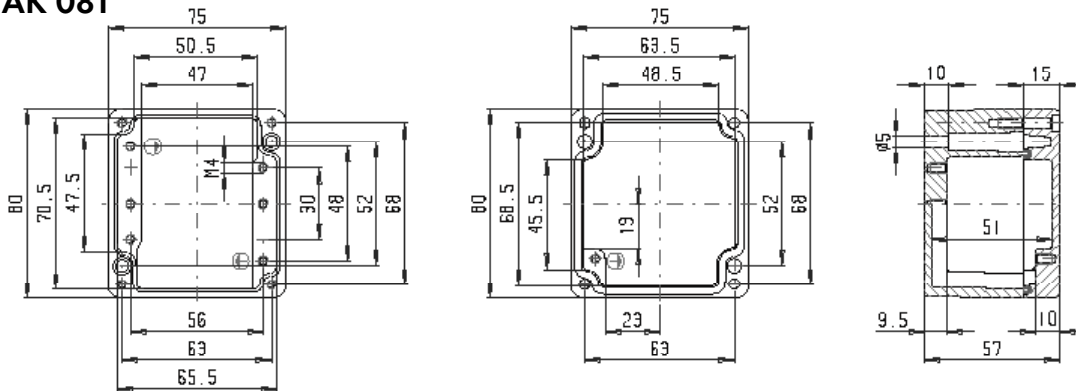
M Kabelverschraubungen			
a Cable glands			
x Kabelwartel			
A		A/B	C/D
c	D	PG 7	4 1
B		PG 9	3 1
		PG 11	
		PG 13,5	
		PG 16	
		PG 21	
		PG 29	
		PG 36	
		PG 42	
		PG 48	

AK 063



M Kabelverschraubungen			
a Cable glands			
x Kabelwartel			
A		A/B	C/D
c	D	PG 7	6 1
B		PG 9	5 1
		PG 11	
		PG 13,5	
		PG 16	
		PG 21	
		PG 29	
		PG 36	
		PG 42	
		PG 48	

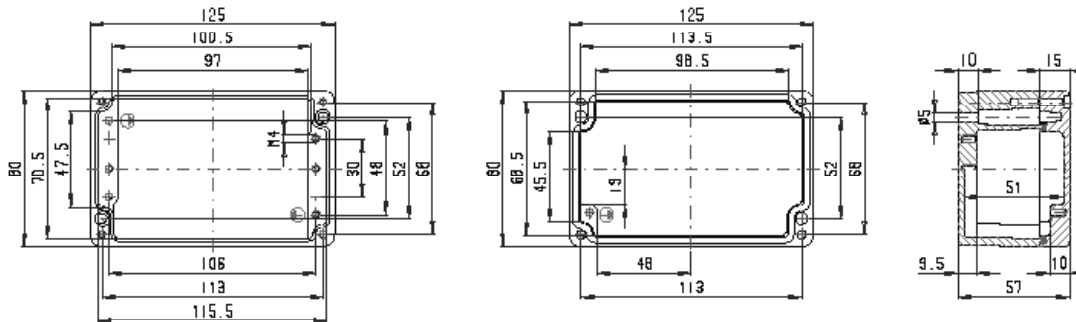
AK 081



M Kabelverschraubungen
a Cable glands
x Kabelwartel

A		A/B/C/D	
C	D	A	B/C/D
B	PG 7	4	3
M 16	PG 9	4	2
	PG 11	2	2
M 20	PG 13,5	2	2
	PG 16	1	1
M 25	PG 21		
M 32	PG 29		
M 40	PG 36		
M 50	PG 42		
M 63	PG 48		

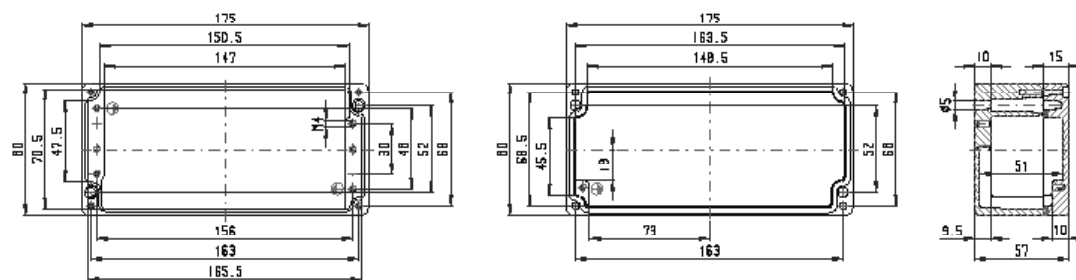
AK 082



M Kabelverschraubungen
a Cable glands
x Kabelwartel

A		A/B/C/D	
C	D	A	B/C/D
B	PG 7	10	3
M 16	PG 9	8	2
	PG 11	4	2
M 20	PG 13,5	4	2
	PG 16	3	1
M 25	PG 21		
M 32	PG 29		
M 40	PG 36		
M 50	PG 42		
M 63	PG 48		

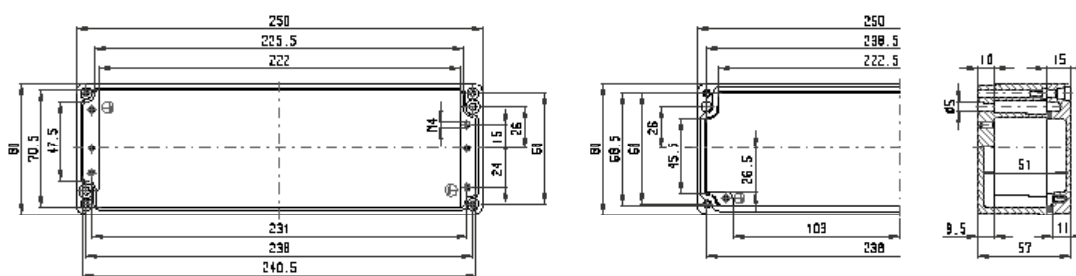
AK 083



M Kabelverschraubungen
a Cable glands
x Kabelwartel

A		A/B/C/D	
C	D	A	B/C/D
B	PG 7	14	3
M 16	PG 9	11	2
	PG 11	7	2
M 20	PG 13,5	6	2
	PG 16	5	1
M 25	PG 21		
M 32	PG 29		
M 40	PG 36		
M 50	PG 42		
M 63	PG 48		

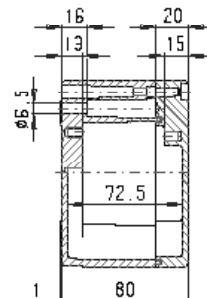
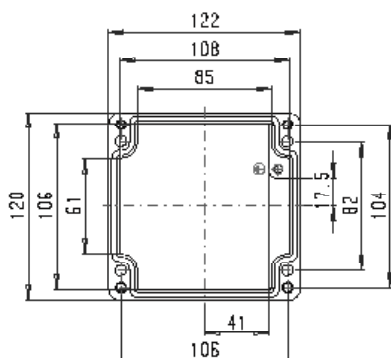
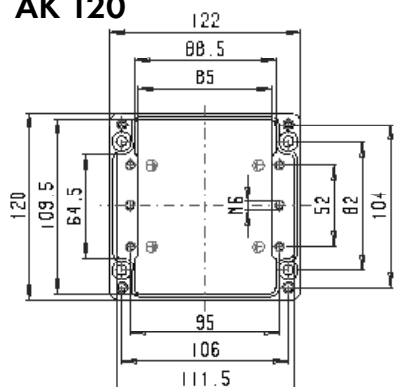
AK 084



M Kabelverschraubungen
a Cable glands
x Kabelwartel

A		A/B/C/D	
C	D	A	B/C/D
B	PG 7	22	3
M 16	PG 9	15	2
	PG 11	10	2
M 20	PG 13,5	9	2
	PG 16	7	1
M 25	PG 21		
M 32	PG 29		
M 40	PG 36		
M 50	PG 42		
M 63	PG 48		

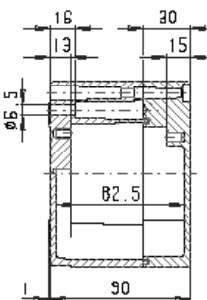
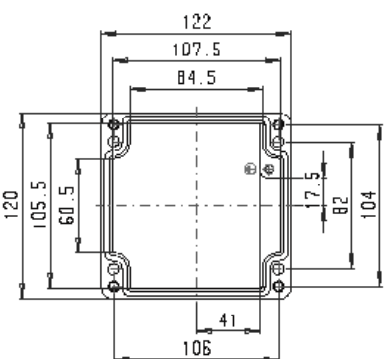
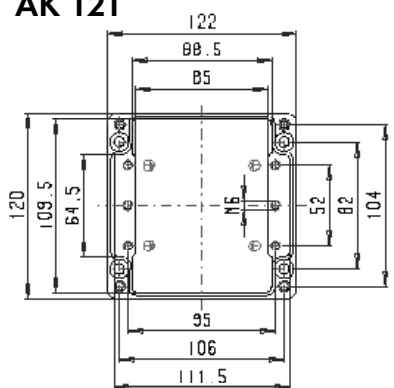
AK 120



M Kabelverschraubungen
a Cable glands
x Kabelwartel

A		A/B	C/D
C	D		
M 16	PG 7	10	8
	PG 9	8	6
	PG 11	6	4
M 20	PG 13,5	6	4
	PG 16	5	2
M 25	PG 21	2	1
M 32	PG 29	2	1
M 40	PG 36		
M 50	PG 42		
M 63	PG 48		

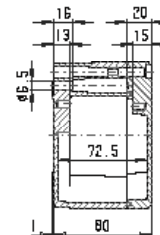
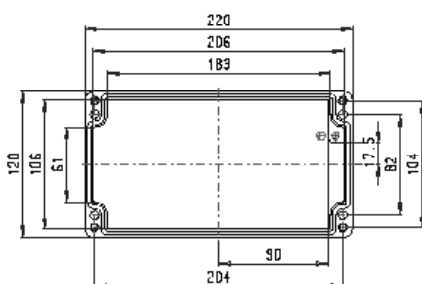
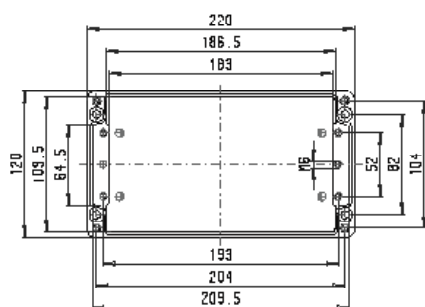
AK 121



M Kabelverschraubungen
a Cable glands
x Kabelwartel

A		A/B	C/D
C	D		
M 16	PG 7	10	8
	PG 9	8	6
	PG 11	6	4
M 20	PG 13,5	6	4
	PG 16	5	2
M 25	PG 21	2	1
M 32	PG 29	2	1
M 40	PG 36		
M 50	PG 42		
M 63	PG 48		

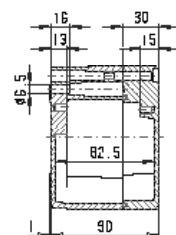
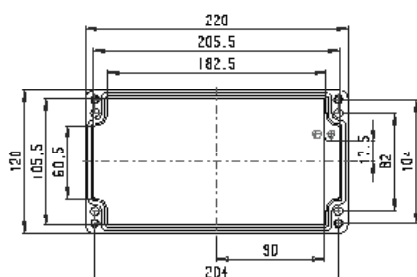
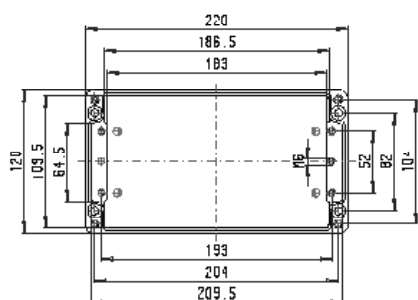
AK 122



M Kabelverschraubungen
a Cable glands
x Kabelwartel

A		A/B	C/D
C	D		
M 16	PG 7	22	8
	PG 9	20	6
	PG 11	14	4
M 20	PG 13,5	14	4
	PG 16	11	2
M 25	PG 21	5	1
M 32	PG 29	3	1
M 40	PG 36		
M 50	PG 42		
M 63	PG 48		

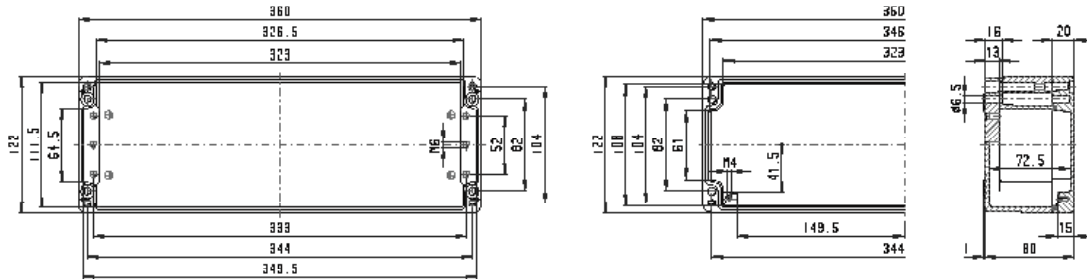
AK 123



M Kabelverschraubungen
a Cable glands
x Kabelwartel

A		A/B	C/D
C	D		
M 16	PG 7	22	8
	PG 9	20	6
	PG 11	14	4
M 20	PG 13,5	14	4
	PG 16	11	2
M 25	PG 21	5	1
M 32	PG 29	3	1
M 40	PG 36		
M 50	PG 42		
M 63	PG 48		

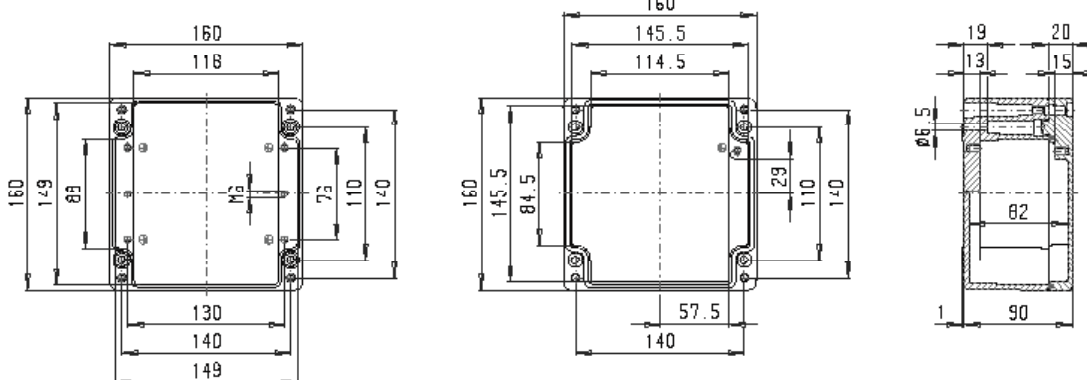
AK 124



M Kabelverschraubungen
a Cable glands
x Kabelwartel

	A	A/B	C/D
C	D	PG 7	38 3
M 16	PG 9	34 8	
	PG 11	26 6	
M 20	PG 13,5	24 4	
	PG 16	20 4	
M 25	PG 21	9 2	
M 32	PG 29	6 1	
M 40	PG 36		1
M 50	PG 42		
M 63	PG 48		

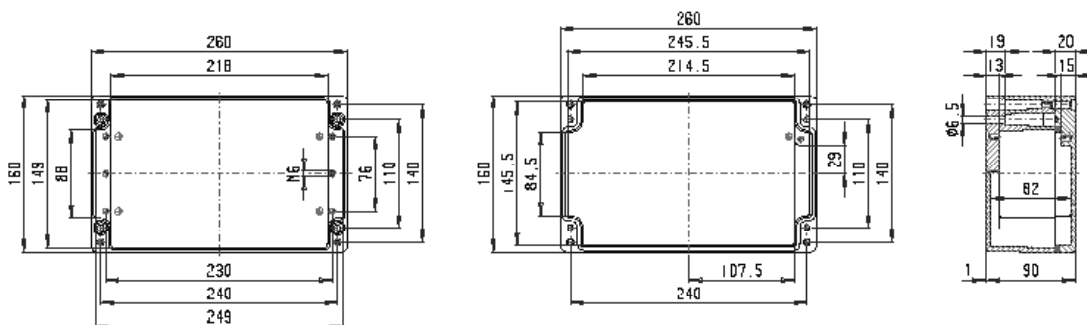
AK 161



M Kabelverschraubungen
a Cable glands
x Kabelwartel

	A	A/B	C/D
C	D	PG 7	21 12
M 16	PG 9	15 8	
	PG 11	10 6	
M 20	PG 13,5	10 6	
	PG 16	8 5	
M 25	PG 21	4 2	
M 32	PG 29	2 2	
M 40	PG 36	2 1	
M 50	PG 42	1	
M 63	PG 48		

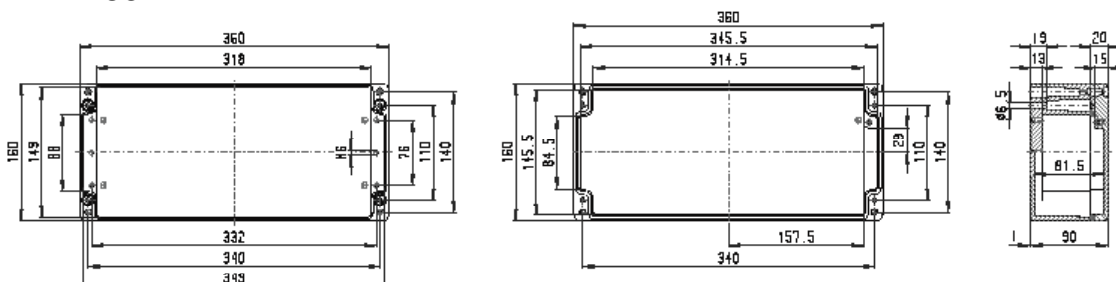
AK162



M Kabelverschraubungen
a Cable glands
x Kabelwartel

	A	A/B	C/D
C	D	PG 7	36 12
M 16	PG 9	30 8	
	PG 11	18 6	
M 20	PG 13,5	18 6	
	PG 16	14 5	
M 25	PG 21	7 2	
M 32	PG 29	4 2	
M 40	PG 36	3 1	
M 50	PG 42	3	
M 63	PG 48		

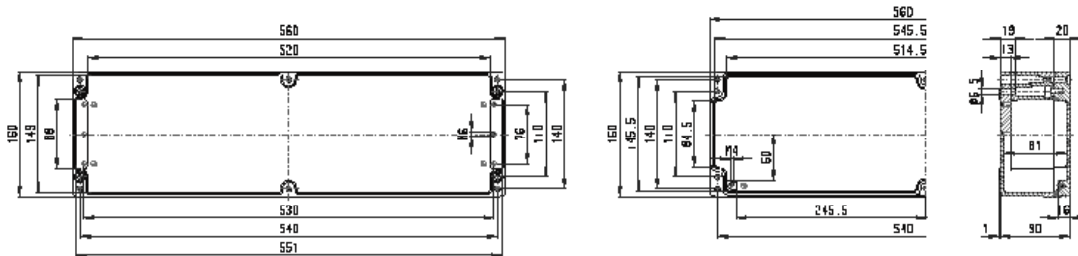
AK 163



M Kabelverschraubungen
a Cable glands
x Kabelwartel

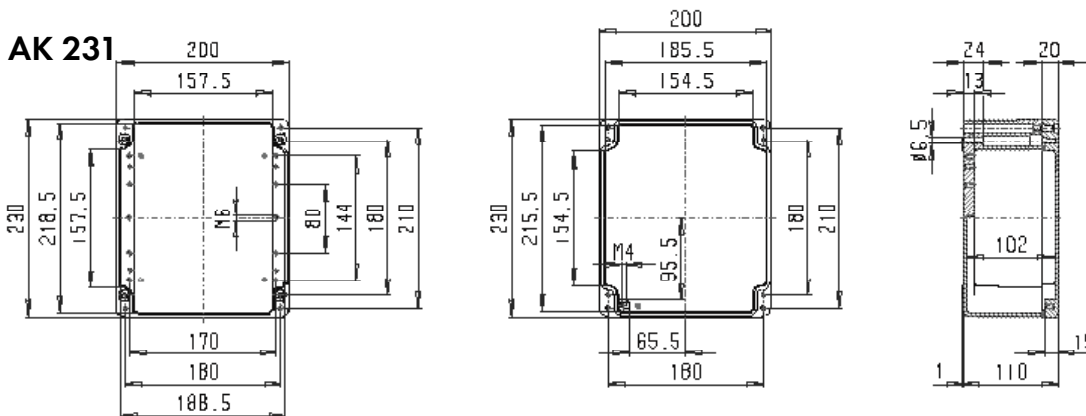
	A	A/B	C/D
C	D	PG 7	54 12
M 16	PG 9	42 8	
	PG 11	28 6	
M 20	PG 13,5	26 6	
	PG 16	20 5	
M 25	PG 21	10 2	
M 32	PG 29	6 2	
M 40	PG 36	5 1	
M 50	PG 42	4	
M 63	PG 48		

AK 164



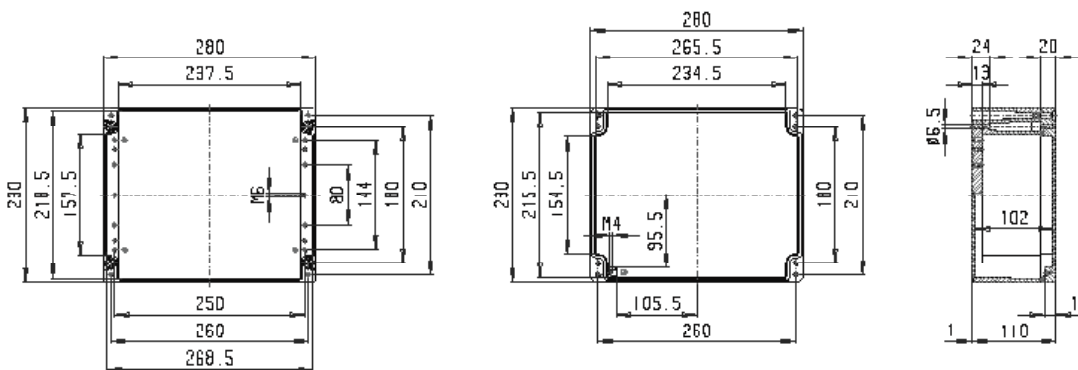
M Kabelverschraubungen			
a Cable glands			
x Kabelwartel			
C	A	A/B	C/D
B	PG 7	84	12
M 16	PG 9	66	8
	PG 11	44	6
M 20	PG 13,5	40	6
	PG 16	32	5
M 25	PG 21	16	2
M 32	PG 29	10	2
M 40	PG 36	8	1
M 50	PG 42	6	
M 63	PG 48		

AK 231



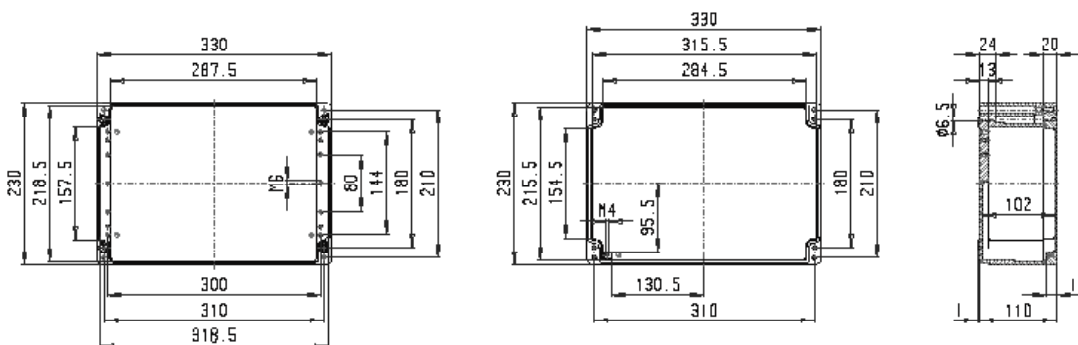
M Kabelverschraubungen			
a Cable glands			
x Kabelwartel			
C	A	A/B	C/D
B	PG 7	36	32
M 16	PG 9	28	24
	PG 11	21	18
M 20	PG 13,5	18	12
	PG 16	10	10
M 25	PG 21	8	8
M 32	PG 29	4	4
M 40	PG 36	3	3
M 50	PG 42	2	2
M 63	PG 48	2	2

AK 232



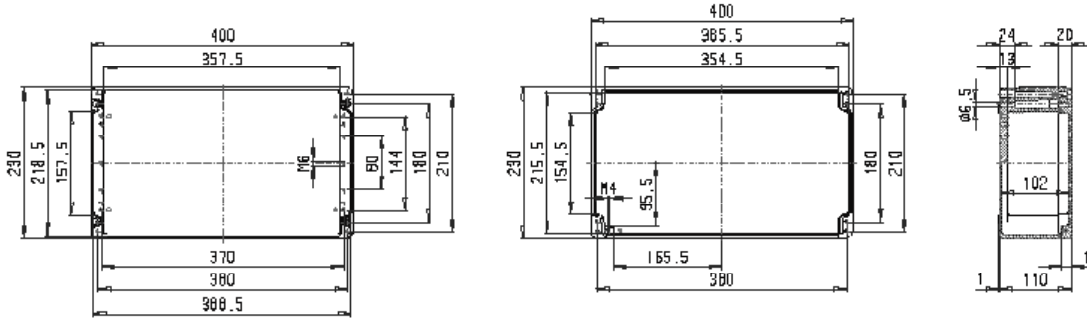
M Kabelverschraubungen			
a Cable glands			
x Kabelwartel			
C	A	A/B	C/D
B	PG 7	52	32
M 16	PG 9	36	24
	PG 11	30	18
M 20	PG 13,5	27	12
	PG 16	16	10
M 25	PG 21	12	8
M 32	PG 29	6	4
M 40	PG 36	4	2
M 50	PG 42	3	2
M 63	PG 48	3	2

AK 233



M Kabelverschraubungen			
a Cable glands			
x Kabelwartel			
C	A	A/B	C/D
B	PG 7	64	32
M 16	PG 9	52	24
	PG 11	36	18
M 20	PG 13,5	33	12
	PG 16	29	10
M 25	PG 21	14	8
M 32	PG 29	7	3
M 40	PG 36	5	2
M 50	PG 42	4	2
M 63	PG 48	4	2

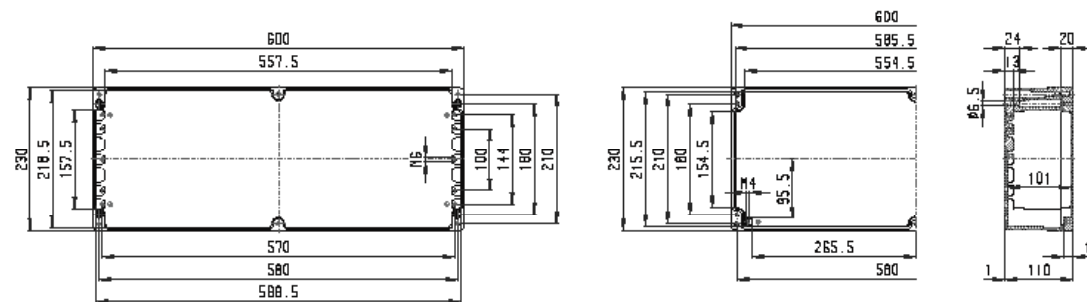
AK 234



M Kabelverschraubungen
a Cable glands
x Kabelwartel

	A	B	C/D	A/B	C/D
	PG 7	80	32		
M 16	PG 9	57	24		
	PG 11	45	18		
M 20	PG 13,5	39	12		
	PG 16	26	10		
M 25	PG 21	18	8		
M 32	PG 29	10	4		
M 40	PG 36	6	2		
M 50	PG 42	5	2		
M 63	PG 48	5	2		

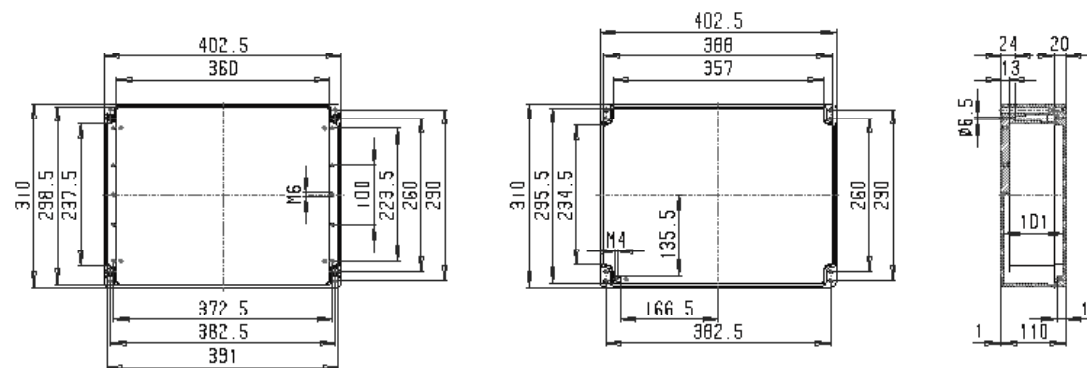
AK 235



M Kabelverschraubungen
a Cable glands
x Kabelwartel

	A	B	C/D	A/B	C/D
	PG 7	120	32		
M 16	PG 9	96	24		
	PG 11	66	18		
M 20	PG 13,5	60	12		
	PG 16	36	10		
M 25	PG 21	24	8		
M 32	PG 29	14	3		
M 40	PG 36	8	2		
M 50	PG 42	8	2		
M 63	PG 48	6	2		

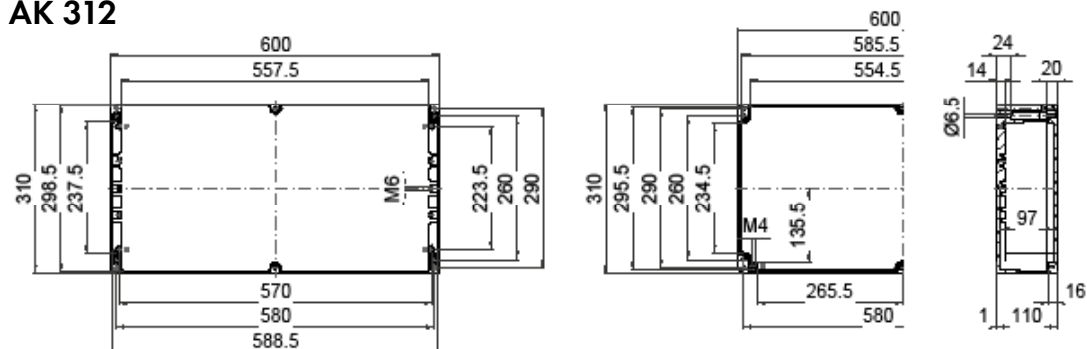
AK 311



M Kabelverschraubungen
a Cable glands
x Kabelwartel

	A	B	C/D	A/B	C/D
	PG 7	76	42		
M 16	PG 9	57	36		
	PG 11	45	27		
M 20	PG 13,5	39	20		
	PG 16	26	16		
M 25	PG 21	18	12		
M 32	PG 29	10	5		
M 40	PG 36	6	4		
M 50	PG 42	5	3		
M 63	PG 48	3	3		

AK 312



M Kabelverschraubungen
a Cable glands
x Kabelwartel

	A	B	C/D	A/B	C/D
	PG 7	120	42		
M 16	PG 9	96	36		
	PG 11	66	27		
M 20	PG 13,5	60	20		
	PG 16	36	16		
M 25	PG 21	24	12		
M 32	PG 29	14	5		
M 40	PG 36	10	4		
M 50	PG 42	8	3		
M 63	PG 48	6	3		

